



Hot-Flo Heat Box

Catheter Hot Air Nozzle System

The Somex Automation Hot-Flo Heat Box is a benchtop Catheter Hot Air Nozzle System. The Heat Box features a digital readout of airflow, a ready lamp for temperature and airflow, and options for Enhanced Control & Monitoring of process parameters. It is available in two configurations: Compact and Umbilical (pictured).

Specifications

Air:	Min 60psi - Max 125psi
Power:	110V AC, 60Hz or 230V AC, 50Hz
Nominal Current:	0.75kVA
Machine Footprint:	Umbilical Configuration: 300mm x 150mm x 227mm (12" x 6" x 9")
Machine Weight:	5kg (11lbs)
Temperature Range:	Ambient - 370°C (700°F)
Air Flow Range:	7-30L/min (15 - 64 SCFH)
Air Pressure Range:	0 - 90psi (0 - 6 Bar)



Key Features

- Accurate Digital Air Flow Controller with adjustment for precise air delivery to the nozzle for greater product build repeatability.
- Ready lamp to indicate the temperature & air flow are within set limits.
- Options for adding an enhanced level of control & monitoring of process parameters by external systems.
- High accuracy temperature control.
- CE Marked.
- Available in Compact configuration or Umbilical Nozzle configuration with remote-control enclosure.
- Variety of heater design options with adjustable V-Groove
- Tooling to aid the product builder in locating the product in the nozzle for repeatable results.
- Foot-operated cooling air blow nozzle.
- Optional vacuum unit available.

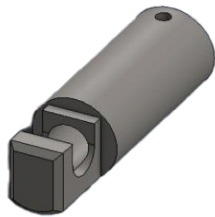
To learn more about the Hot-Flo Heat Box, including a comprehensive list of features and specifications, please visit:



CPS-1000 **Catheter Hot Air Nozzle System**

Nozzle Types:

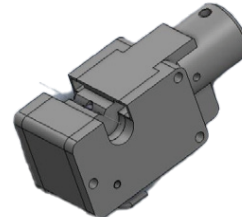
Choose from our custom-designed nozzles crafted to resolve unique customer challenges or request a bespoke design to suit your specific requirements.



**Vertical U-Type Nozzle
Narrow Single Jet
(Standard)**



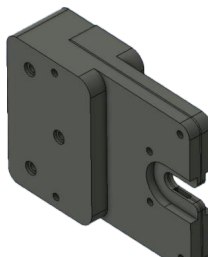
**Vertical U-Type Nozzle
Narrow Twin Dual-
Jet with Integrated
V-Support**



**Vertical U-Type Nozzle
Wide Twin Dual-Jet with
Integrated V-Support**



**Horizontal C-Type
Nozzle Narrow Quad Jet**



**Horizontal C-Type
Nozzle Narrow Dual Jet**



Somex is proud to be an MMT company – the sole source for automated, process-driven medical manufacturing.

Medical Manufacturing Technologies (MMT) brings together applications expertise, technical solutions, and aftermarket support to revolutionize medical device manufacturing.